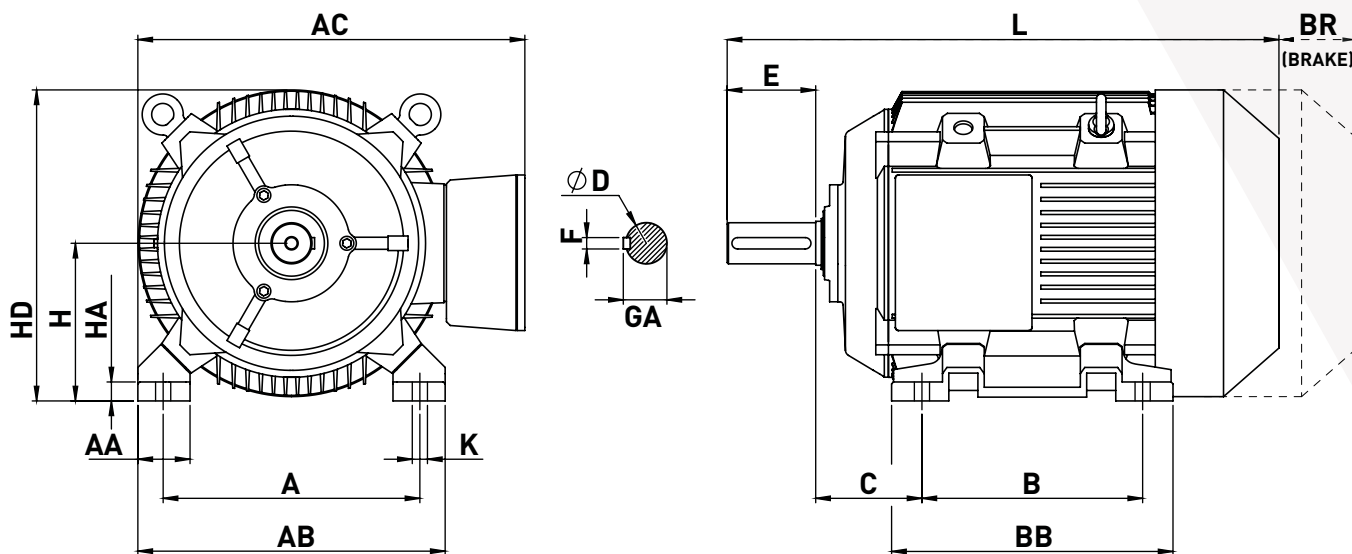
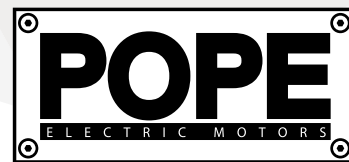


Electric Motor - Frame Size 225M

45 kW - 4 pole - B3



Shaft & Overall dimensions [mm]

L	BR	D	E	GA	F
835	163	60	140	64	18

Foot dimensions [mm]

A	B	C	H	K	HA	AB	BB	AA	AC	HD
356	311	149	225	19	28	435	400	79	560	455



Terminal box rotatable 90°



Modular bolt-on feet

Frequency	Hz	50	60
Power	kW	45	54
Voltage	V	400/690	460/795
Speed	rpm	1474	1776
Number of Pole		4	
Rated Current	A	78	
Starting Current	Ia/In	7.4	
Torque	Nm	291.6	
Pull-out torque	MK/Mn	2.3	
Starting torque	Ma/Mn	2	
Moment of inertia	Kgm ²	0.5544	
Efficiency	100%	94	
	75%	94.1	
	50%	90.78	

Power factor	cos φ	0.886
Degree of protection	IP	55 / 66
Motor protection		3xPTC 130°C
Weight	kg	341
Bearing	DE	6313
	NDE	6313
Temperature rise	K	58
Ambient temperature	°C	-30 to +40
Type of duty		S1
Insulation Class		F
Max. radial force	N	5000
Noise level	dB	78
Altitude	m	1000